

# Enterprise

remote site monitoring software



***Security, environmental monitoring & remote site monitoring***

***Safeguard equipment and systems 24/7/365***

The AX Enterprise is a web-based monitoring and control application specifically designed for larger installations and remote sites.

The Enterprise software operates on Microsoft Server 2008 with IIS (Internet Information Service). Access can be from anywhere in the world with internet access and a standard web browser like Microsoft Internet Explorer. Using a standard web browser avoids the need to install and maintain additional client software. Industry standard firewalls can be used to ensure suitable protection of the data.

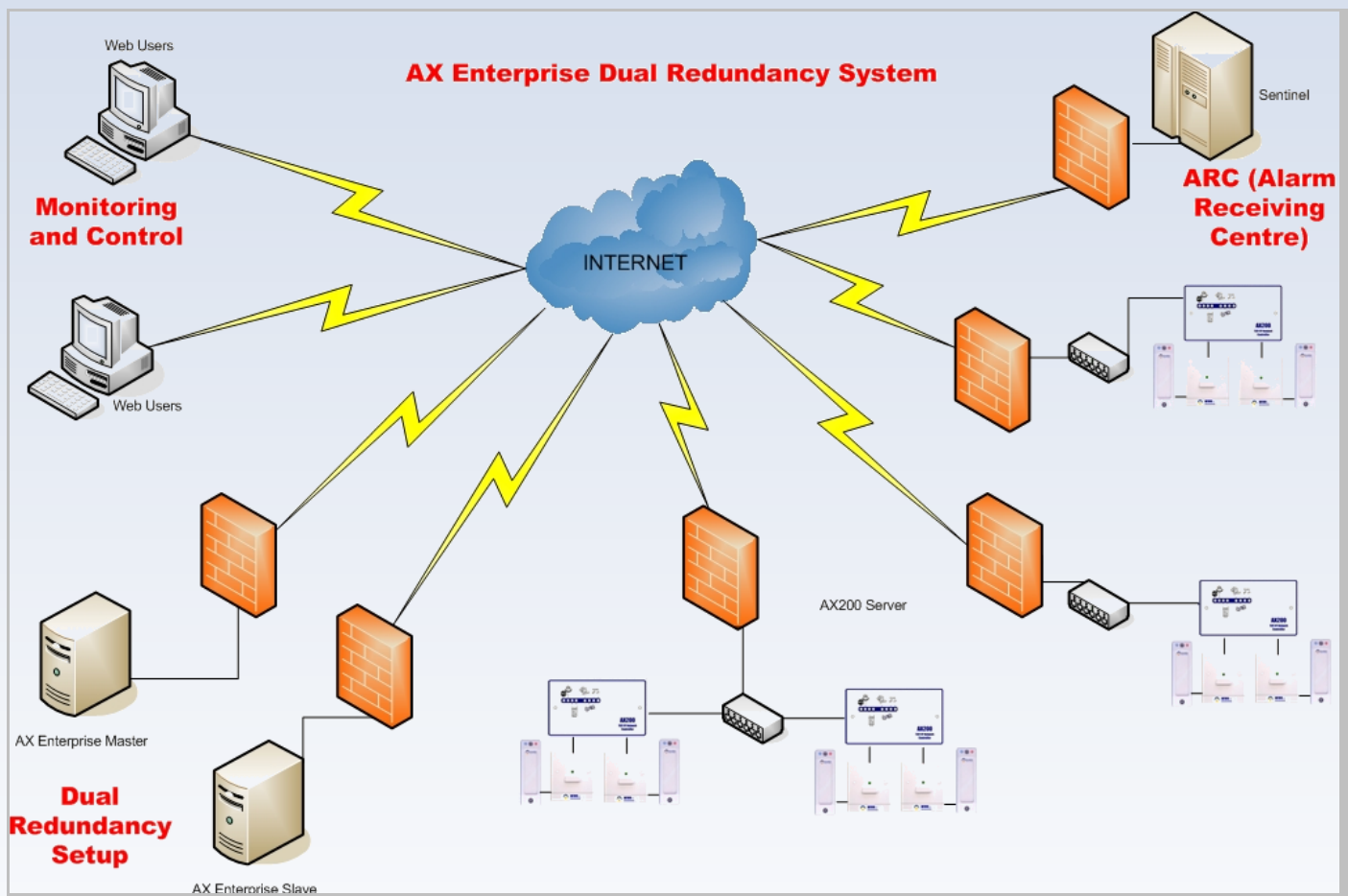
Graphical floor plans allow visual control and monitoring of sites and areas. Drawings and photographs can be imported in standard formats eg JPEG, GIF, TIFF and BMP, allowing users to

quickly and easily set up new sites or area's.

AX200 software and Enterprise can run on the same server but is often installed onto a separate server with an ISP (Internet Service Provider) The AX200 software acts as a communication server and only publishes pre-defined information.

The software as standard supports up to 512 sites expandable up to 4096 sites with 512 readers per area/site. 65,000 cardholders are supported with 256 time zones and 65,535 access groups subject to hardware requirements.

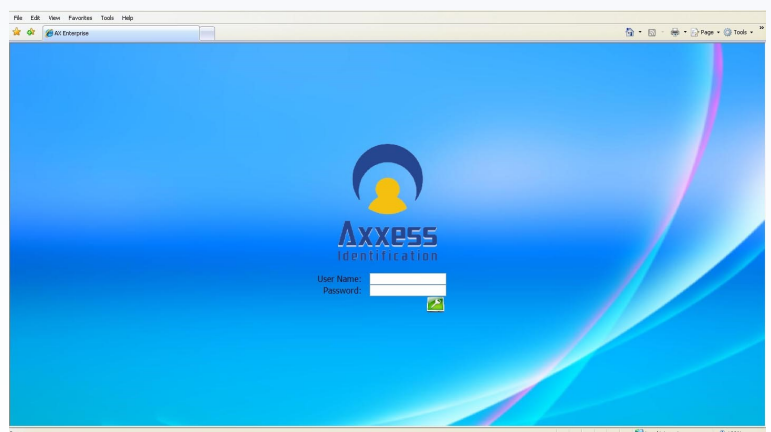
Enterprise software is also available as a Dual Redundant version providing fully automatic changeover in case of failure of the lead/main server.



### Logging into the software

Either use a fixed IP address or a URL eg [www.i-boxsolutions.com](http://www.i-boxsolutions.com) to navigate to the correct site. Smart mobile phones are supported to view alarms and provide limited control for devices.

Up to 99 users can be logged in simultaneously with 9,999 operators. There are 5 different authorisation levels including Administrator, Engineering, Reception, Alarm Operator and Standard. All transactions and operations by users are recorded with date and time stamp in the log file to provide full traceability.



System Overview

The main screen provides a quick overview of all sites and areas. Alarms are indicated by a flashing red icon. Each site overview can have an access, sensor, alarm status, video camera and who's in icon. Real time live data feeds provides you with the information you need.

Real time readings, alarms and transactions are shown on the right hand side of the screen. By clicking on any of these transactions will bring up a detailed screen—you can control doors, sensors, change settings, view cardholders etc. AX Enterprise software allows you to fully control from any PC with a web browser.

Floor-plans can be easily added to build your own site. Drag and drop icons allow for easy placement of sensors and doors.

The drag and drop set-up allows you, within minutes, to add a site or area with those doors and devices you wish to control. Doors and devices can be represented in multiple floor-plans allowing simple control and authorisation based on a per floor-plan basis.

History Log

History logs are presented graphically with a calendar for fast and easy retrieval of data to find information from a particular day. Days displayed in blue contain transactions.

When selecting a specific day, a 24 hour time bar shows with transactions in red and green—red represents an alarm. Clicking on this shows the transactions below from that time period.

Floorplan Setup

New floor plans are easily setup by uploading a photograph or floor plan drawing, adding icons representing the devices available in the system which can be dragged from the toolbox on the right onto the floor plan screen.

Doors are represented with blue icons which change state to red for alarms or yellow for system faults. Camera icons enable you to see live video for selected IP cameras.

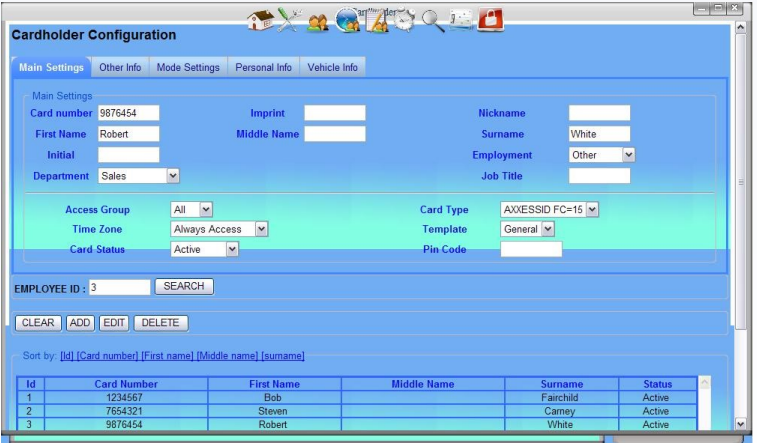
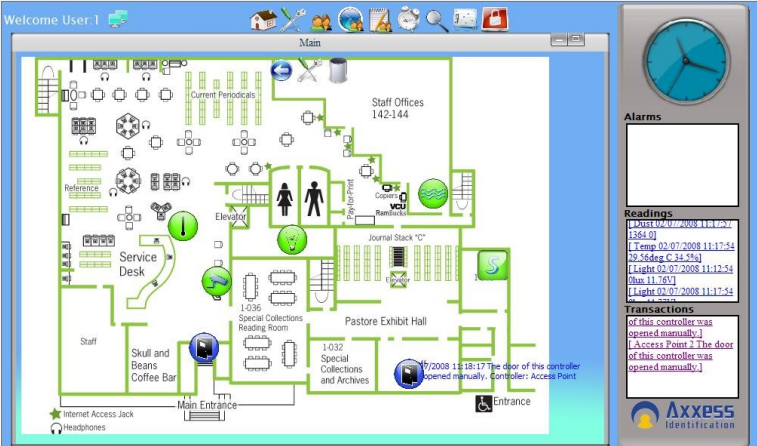
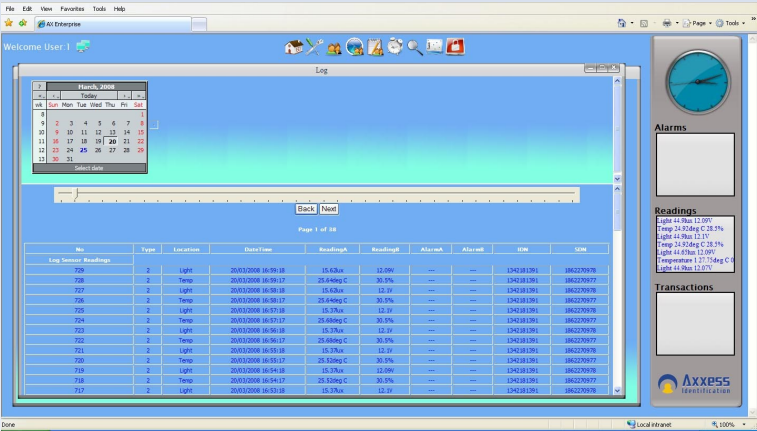
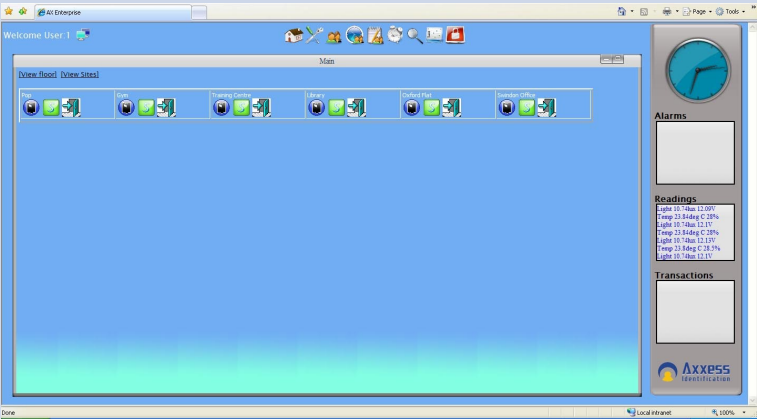
Cardholder Configuration

Cardholders can be easily added or amended using the Cardholder Configuration screen. There are 256 time zones and 65,535 access groups cards—allowing cardholders to be given very specific access rights.

Exception time zones can be created to allow access but automatically generating a central warning or email if the cardholder enters the building out of normal hours.

With over 70 database fields per cardholder the system caters for all applications and industries Cardholder amendments are recorded with date and time stamps.

Cardholder data includes department, company details, time and attendance data, vehicle details with ANPR option and cardholder photograph.



## Sensor Readings

Double-clicking on a sensor icon displays the last 10 transactions, providing a quick overview of trends.

High, low and pre alarms can be adjusted—including the time intervals of reading and reporting. Alarm readings are updated in real time.



## Door Details

Single right click on the door icon allows remote opening of the door— subject to authorisation level, whilst double clicking the door icon displays the detail screen.

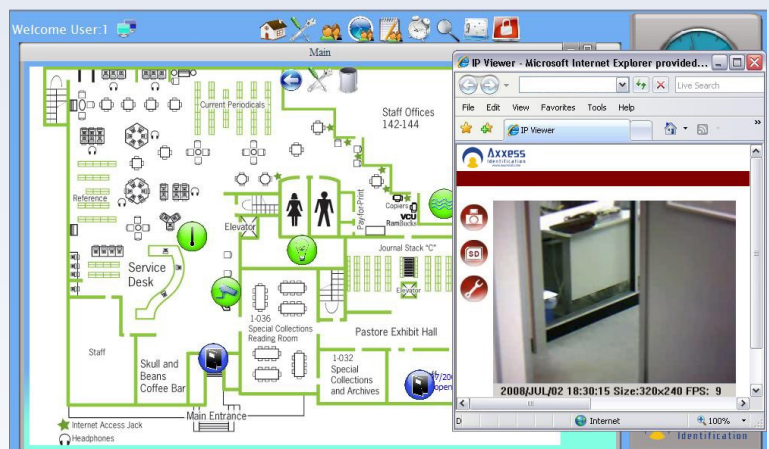
The last 10 transactions are instantly visible and mode settings like High Security status or permanently unlocked can be altered.



## Who's In Feature

Counters per area or site can be linked to changing mode settings of devices/doors or automatically arm and disarm areas or alarm systems based on occupancy.

Sensor groups can also be linked to this including general input / output sensors for advanced features. The overview screen can show status of area or site and number of people on site. A double click on the who's in icon provides an instant list of people present.



## Minimum PC Specification

- Processor: Dual Core 2.13Ghz or higher—Quad Core 2.0Ghz recommended
- RAM: 2GB—4GB recommended
- Hard Disk: 4GB of free disk space (dependent on size of database and amount of backups)
- Gigabit Ethernet Network Card
- CD ROM Drive
- Screen resolution: 1024 x 768
- Operating System: Windows Server 2008 R2
- Internet Information Services (IIS) v7

## Ordering Information

- |                  |                              |
|------------------|------------------------------|
| AX-ENTERPRISE    | AX Enterprise                |
| AX-ENTERPRISE-DR | AX Enterprise Dual Redundant |



27-28 Shrivenham Hundred Business Park, Watchfield, Swindon,  
Wiltshire SN6 8TZ United Kingdom  
Tel: +44 (0)1793 784002  
Fax: +44 (0)1793 784005  
Email: [info@axxessid.com](mailto:info@axxessid.com)  
Website: [www.axxessid.com](http://www.axxessid.com)

Distributor: